

Model Name:  
**CUSTOMIZED  
ASPIRE**

Style of the home:  
**CONTEMPORARY  
WESTCOAST**

**5 bedrooms 4 full bathrooms on  
the main and upper floors.**

**Developed walkout 2 bedrooms  
and 1-bathroom legal suite.**

**Customized kitchen cabinets  
and spice kitchen.**

**9-foot ceiling on the main floor  
and basement.**



THE EXTERIOR PHOTOS FOR ADVERTISEMENT PURPOSES ONLY.

**18 WATERFORD CRESCENT, CHESTERMERE**

**2817 SQ.FT**

**BASEMENT: 1042 SQ.FT**

Developed legal suite.  
Walkout suite.  
Side entrance.  
2 large bedrooms.  
1 bathroom  
Appliance: 30" electric range and oven  
30" fridge freezer.  
Kitchen with pantry.  
Stackable laundry rough-in.  
Approximately 9' ceiling

**MAIN FLOOR: 1307 SQ.FT**

Open to above family area.  
Main floor bedroom and full bathroom.  
Main floor 9' ceiling and 8' doors.  
Spice Kitchen with pantry  
Mudroom area with a bench.  
MDF shelving throughout the main floor closets  
Main kitchen – Built in wall oven & Microwave  
30" gas cooktop, 36" fridge freezer, dishwasher.  
Custom kitchen cabinets and quartz countertops.  
Kitchen Island with flushed eating bar  
and 6" drop ceiling over the kitchen Island.

Main floor separate dining area with a feature wall  
Family area with built in gas fireplace.  
Sliding patio door.  
Over 175 sq.ft. of deck.  
Tripple car garage with a side door entrance.  
Gas rough in for BBQ on the deck

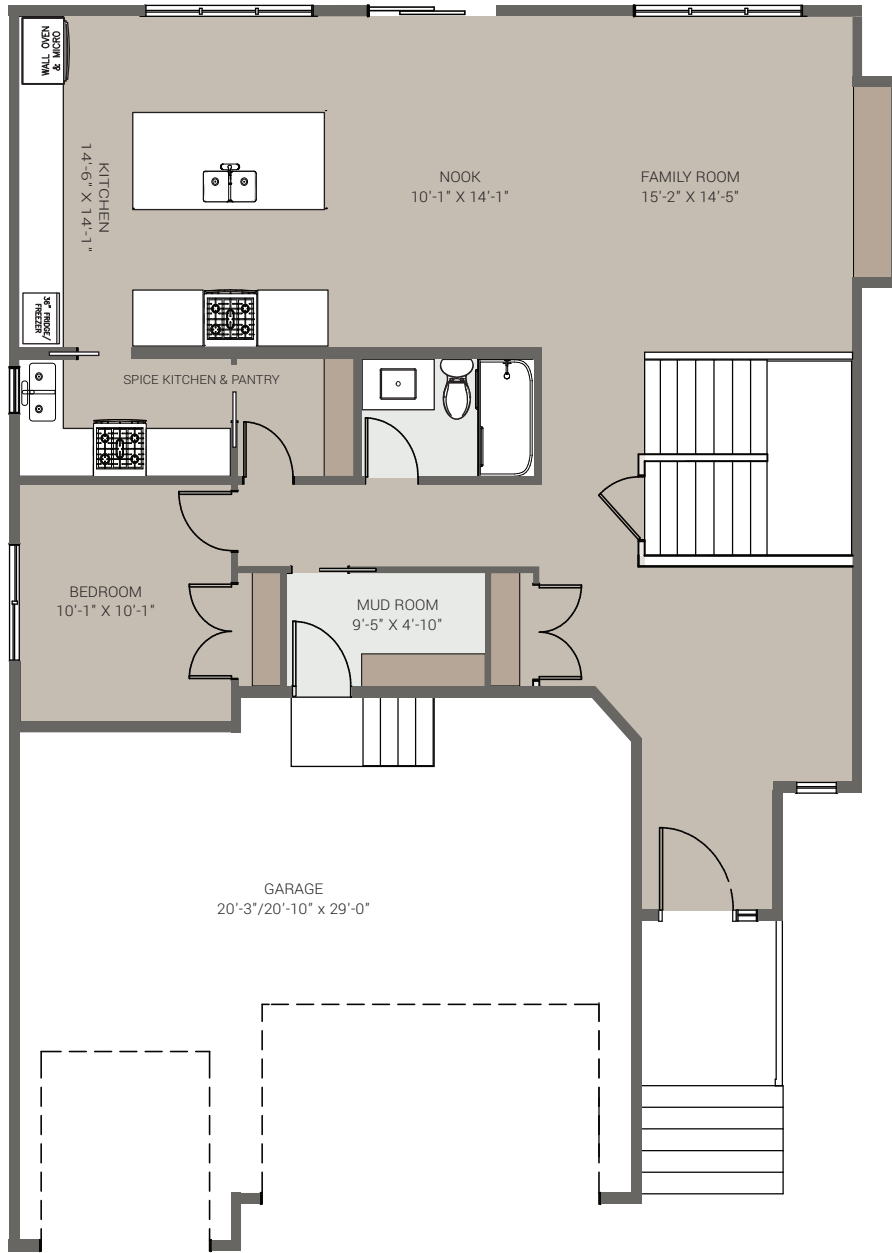
**UPPER FLOOR: 1510 SQ.FT.**

A total of 4 bedrooms, 3 bathrooms, laundry room, and a bonus room on the upper floor.  
Bonus room with tray ceiling.  
Jack & Jill bathroom.  
The primary bedroom with a tray ceiling.  
The primary bedroom with a walk-in closet  
Ensuite bathroom comes with a double vanity, jetted tub with tiled deck, shower with tile base and tiled surround, and 10 mil glass doors.  
Carpet in bedrooms and upper floor common/bonus area.  
MDF shelving in all closets on the upper floor.

**EXTERIOR:**

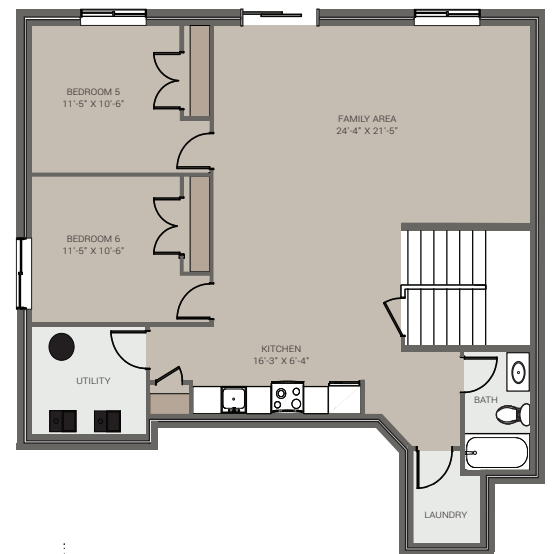
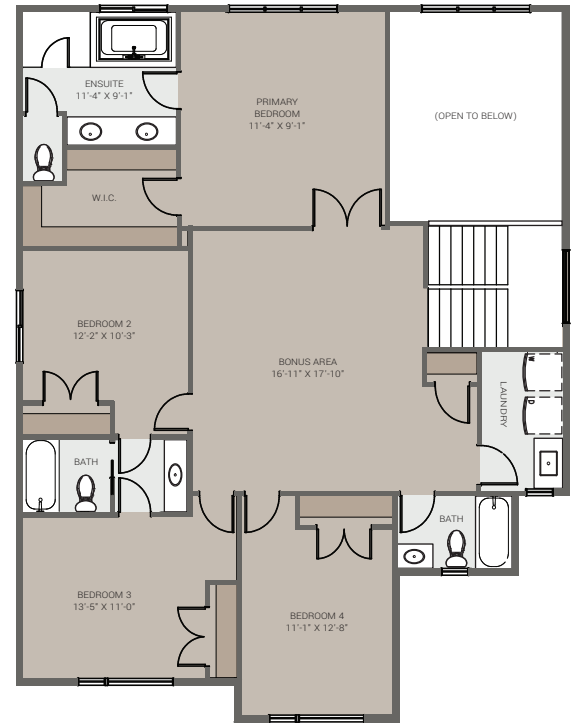
Textured stucco  
Boards & Battens on the front exterior  
Black pro-stack Lite – stone masonry.  
Trim around all windows on front & back of the house

Floorplans are illustrative for marketing purposes.  
Final plans may differ. Contact a Green Cedar  
Representative for more information.



MAIN FLOOR: 1307 SQ.FT

UPPER FLOOR: 1510 SQ.FT.



BASEMENT: 1042 SQ.FT