

GLACIER

240 Waterford Heath • Waterford, Chestermere



1180 sq ft



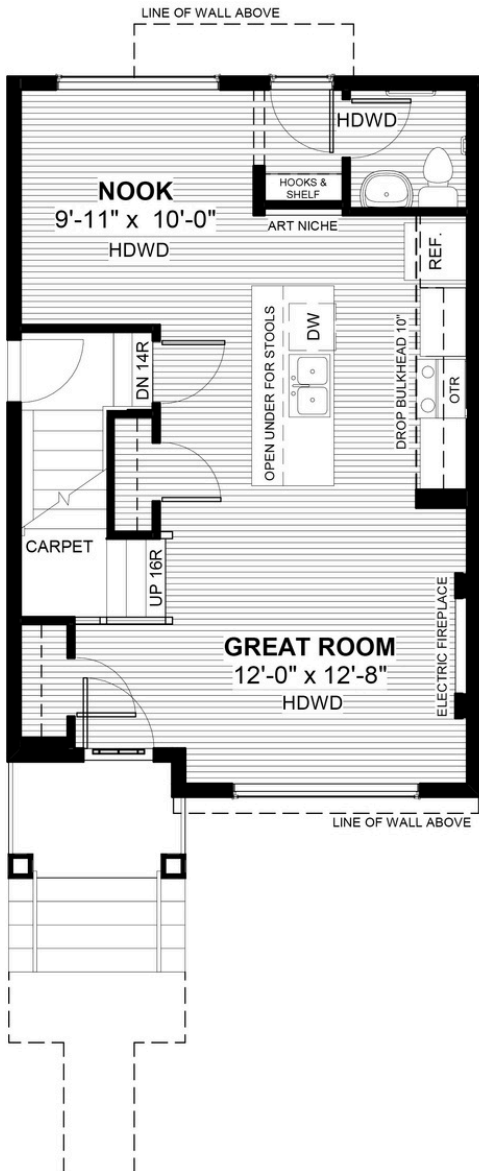
3 bedrooms



2.5 bathrooms

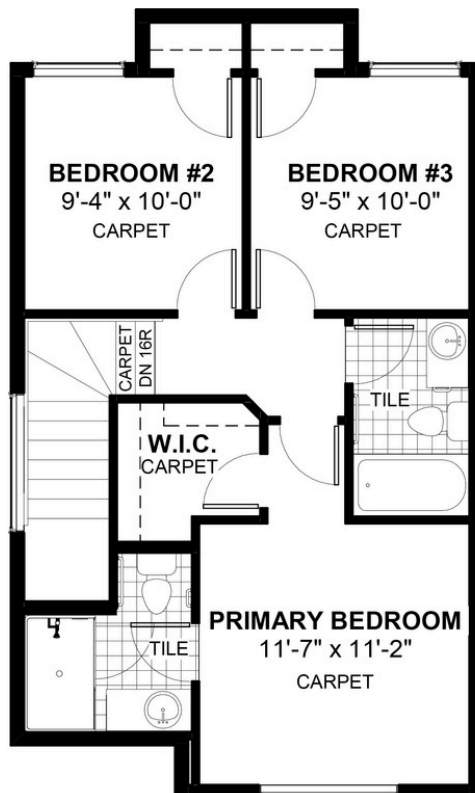


20'



FEATURES

- ✓ Basement Side Entry
- ✓ Rear Parking Pad
- ✓ 9' Main Floor Ceiling
- ✓ Quartz Countertops
- ✓ Electric Fireplace
- ✓ Eng. Hardwood Main Floors
- ✓ Built-In Hooks/Shelf to Rear
- ✓ Large Kitchen Island
- ✓ Art Niche in Kitchen
- ✓ Large Front Window



NOTES



*Price includes lot&gst. Price, features & plan are subject to change at any time. All plans/designs are the exclusive property of Douglas Homes Ltd.