


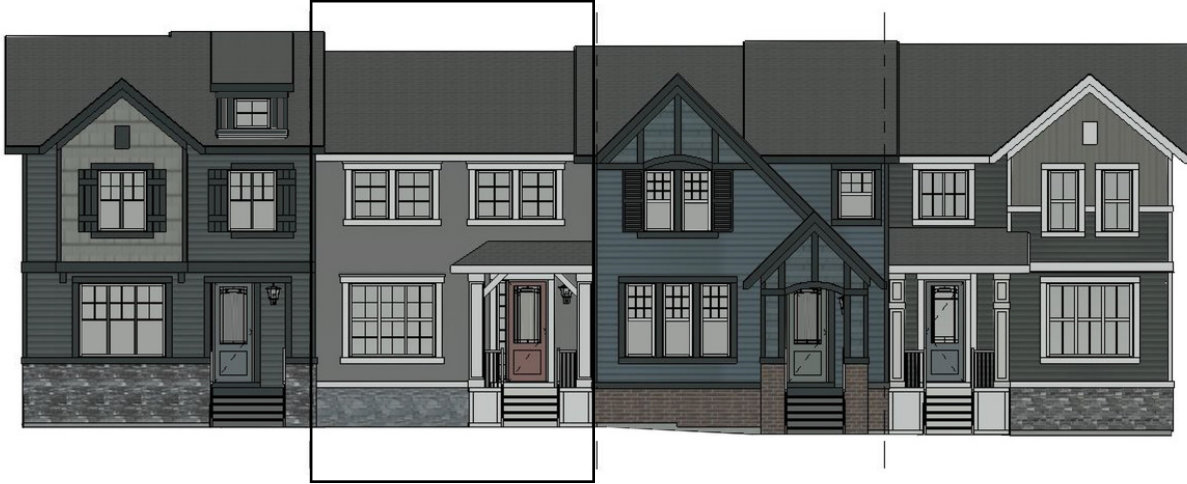
# LOUISE

301 Waterford Blvd • Waterford, Chestermere

 1265 sq ft

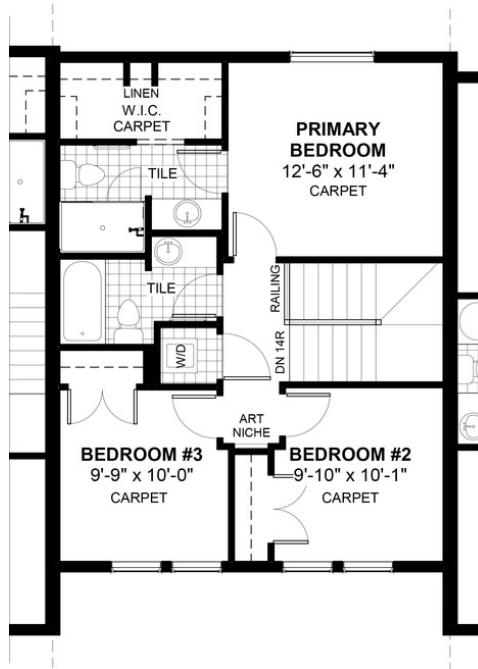
 3 bedrooms

 2.5 bathrooms



## FEATURES

- ✓ Townhouse
- ✓ No Condo Fees
- ✓ Detached Double Car Garage
- ✓ Rear Treated Wood Deck
- ✓ Landscaping & Fencing
- ✓ 9' Main Floor Ceiling
- ✓ Quartz Countertops
- ✓ Eng. Hardwood Floors
- ✓ Upper Floor Laundry
- ✓ Wrought Iron Railing



\*Price includes lot&gst. Price, features & plan are subject to change at any time. All plans/designs are the exclusive property of Douglas Homes Ltd.