


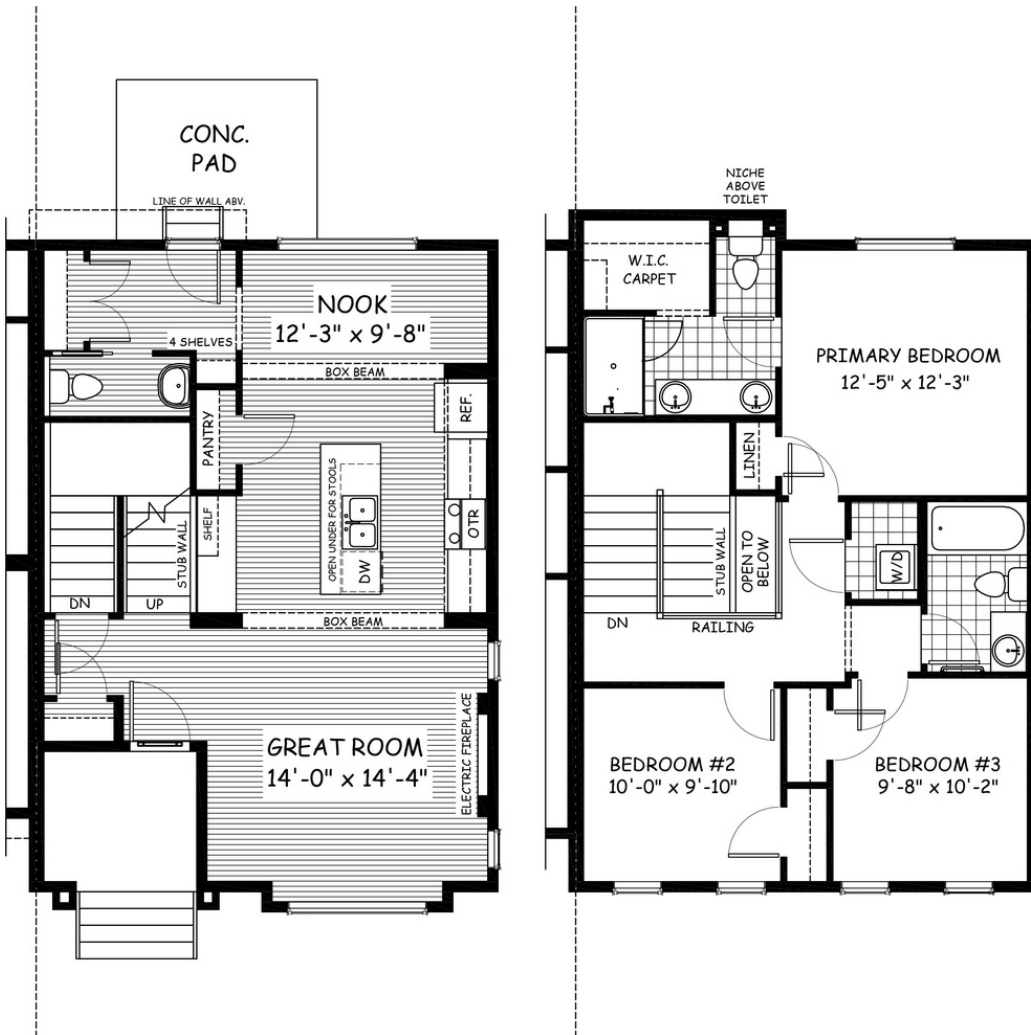
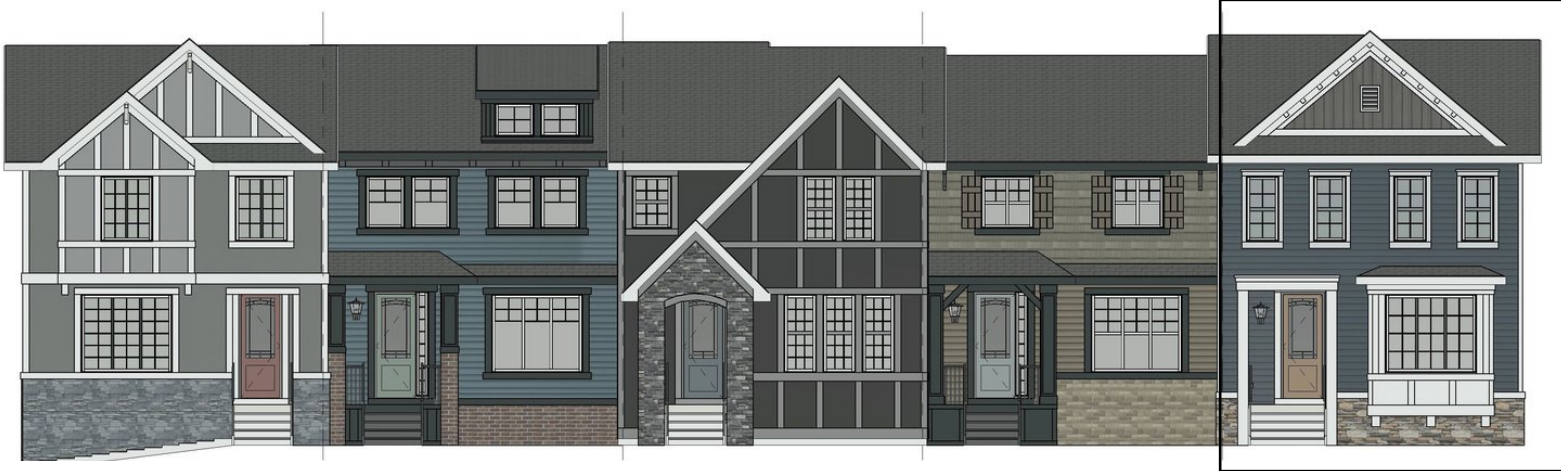
# MORaine

233 Waterford Blvd • Waterford, Chestermere

 1383 sq ft

 3 bedrooms

 2.5 bathrooms



## FEATURES

- ✓ Townhouse, No Condo Fees
- ✓ End Unit
- ✓ Detached Double Car Garage
- ✓ Landscaping & Fencing
- ✓ Electric Fireplace
- ✓ Undeveloped Basement
- ✓ 9' Main Floor Ceiling
- ✓ Rear Concrete Pad
- ✓ Quartz Countertops
- ✓ Hardwood Floors
- ✓ Wrought Iron Railings



\*Price includes lot&gst. Price, features & plan are subject to change at any time. All plans/designs are the exclusive property of Douglas Homes Ltd.