


# MOUNT RUNDLE

86 Waterford Road • Waterford, Chestermere

 2029 sq ft

 3 bedrooms

 2.5 bathrooms

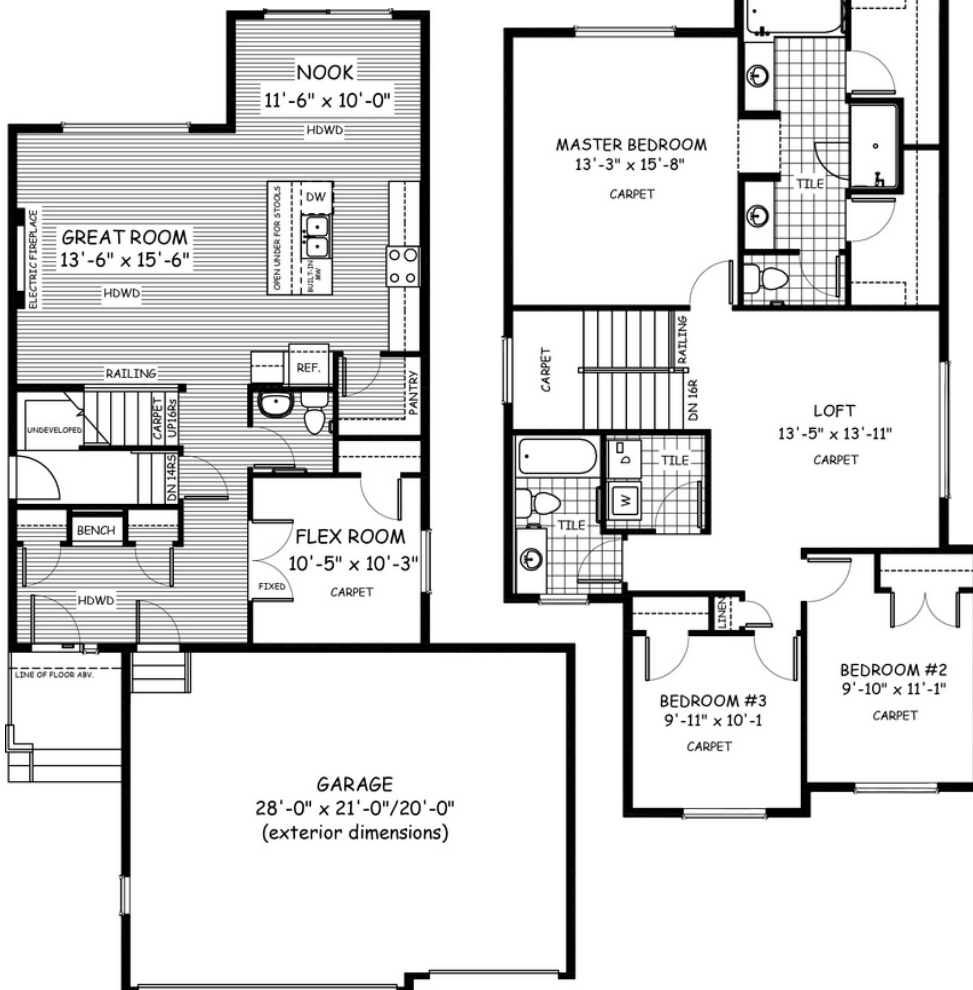


## FEATURES

- ✓ Triple Car Garage
- ✓ Basement side entry
- ✓ Upper floor loft
- ✓ 9' Main Floor Ceiling
- ✓ Quartz Countertops
- ✓ Electric Fireplace
- ✓ Hardwood Floors
- ✓ Upper Floor Laundry
- ✓ Double sinks to Ensuite



## NOTES



\*Price includes lot&gst. Price, features & plan are subject to change at any time. All plans/designs are the exclusive property of Douglas Homes Ltd.