


PEYTO

22 Waterford Road • Waterford, Chestermere

 1476 sq ft

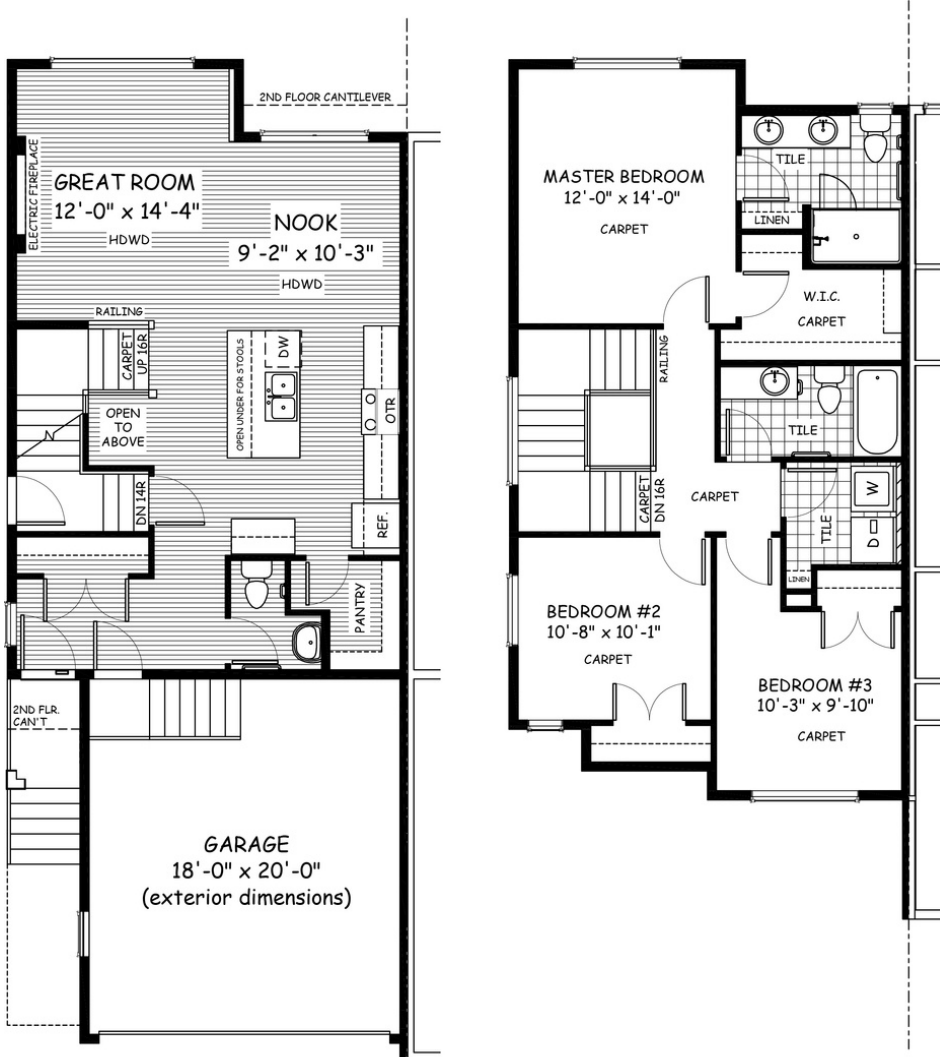
 3 bedrooms

 2.5 bathrooms



FEATURES

- ✓ Duplex (left unit)
- ✓ Basement side entry
- ✓ 9' Main Floor Ceiling
- ✓ Quartz Countertops
- ✓ Electric Fireplace
- ✓ Hardwood Floors
- ✓ Wrought Iron Railings
- ✓ Upper Floor Laundry
- ✓ Double sinks to Ensuite



NOTES



*Price includes lot&gst. Price, features & plan are subject to change at any time. All plans/designs are the exclusive property of Douglas Homes Ltd.