

TROON

356 Waterford Blvd • Waterford, Chestermere



1186 sq ft



3 bedrooms



2.5 bathrooms

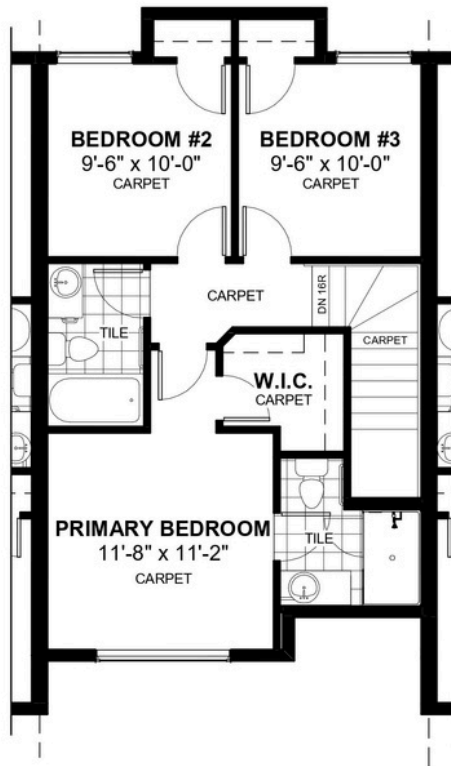
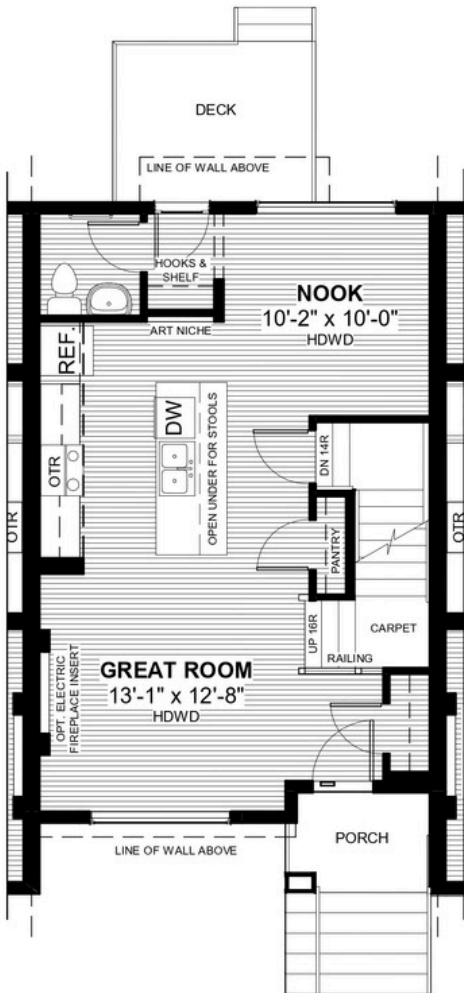


20'



FEATURES

- ✓ Townhouse
- ✓ No Condo Fees
- ✓ Rear Garage
- ✓ 9' Main Floor Ceiling
- ✓ Treated Wood Deck
- ✓ Full Landscaping to Front/Back
- ✓ Quartz Countertops
- ✓ Eng. Hardwood Main Floor
- ✓ Built-In Hooks & Shelf to Rear
- ✓ Walk-In Closet



*Price includes lot&gst. Price, features & plan are subject to change at any time. All plans/designs are the exclusive property of Douglas Homes Ltd.