

# WATERTON

136 Waterford Way • Waterford, Chestermere



1698 sq ft



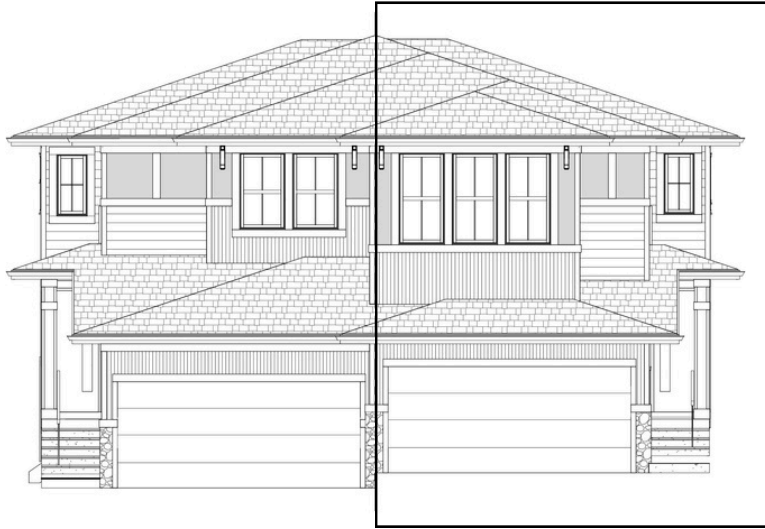
3 bedrooms



2.5 bathrooms



22"



## FEATURES

- ✓ Duplex (Right Unit)
- ✓ Upper Floor Bonus Room
- ✓ 9' Main Floor Ceiling
- ✓ Quartz Countertops
- ✓ Electric Fireplace
- ✓ Eng. Hardwood Main Floors
- ✓ Upper Floor Laundry
- ✓ Built-In Bench to Entry
- ✓ Double Vanities to Ensuite
- ✓ Walk-In Pantry



## NOTES



\*Price includes lot&gst. Price, features & plan are subject to change at any time. All plans/designs are the exclusive property of Douglas Homes Ltd.